

BANBURY TENNIS CLUB

LINECALL - SPRING 2011

www.banburytennis.co.uk

Welcome everyone to the start of a new Tennis Season!

Looking back over the winter, thanks to players who've been making use of our fantastic new flood lights and the online booking facility that has proven really successful! Also thanks to all who have represented the club in the various winter league matches. As I'm writing this, league positions are still to be decided but several of our teams are in with a great shout of gaining promotion!!

Looking forward, our summer schedule starts at the beginning of April with Club nights back to Tuesdays and Fridays from 6.30pm. We also have a full schedule of matches both in the evenings and at the Weekends. For anyone who hasn't played matches before but would like to get involved, please contact one of the committee or team captains (see below).

After spending £29,000 on the floodlights project, including a £5,000 interest free loan we are looking at the next. Our courts will need resurfacing over the next couple of years and this won't come cheap (current estimates are around the £30,000 mark). Fund raising will become a more prominent feature in and around the club so if anyone has any ideas please bring them to the committee. In the meantime we are looking to start a weekly lottery. Full details of this have been posted in the club house so if you'd like to take part and help raise funds to maintain the clubs facilities please take a look and put your name down!!

Finally, I'd like to welcome Godwin Abah to the role of Head Coach. Godwin has lots of great ideas which I'm sure will benefit many of us so I look forward to him getting stuck in!

Rob

CLUB NIGHT ROTA

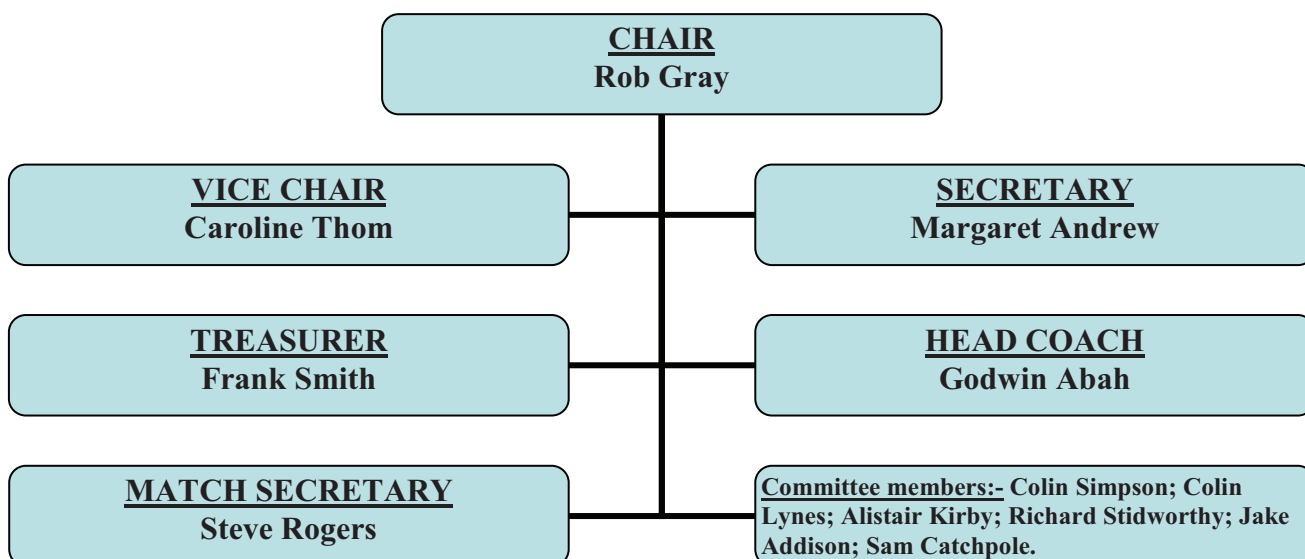
The rota will be in place again this summer. The duties for the night are to organise game play for those attending (1 set to 6-5 maximum), to ensure those completing a set are mixed with others and to ensure the clubhouse is left tidy at the end of the evening. Also as a representative of the club, to welcome any new players who turn up. Please help us make a first good impression by having a chat and handing out a club leaflet.

PLEASE NOTE

2011 Subscriptions are due by 30th APRIL

Please see club leaflet for details

2011 COMMITTEE



COACHING NEWS

Full details of our coaching programme for 2011 can be found on the coaching page from our website at: <http://www.banburytennis.co.uk>.

On Sunday 17th April Babolat are hosting a racket testing day which includes:
- a Tournament for which there will be a small fee and
- a Barbeque

Members should check for further information on the notice board in the Club House nearer the date.

Junior Club Nights will commence from April 5th.
Adults are also invited.

Godwin

Summer Team Captains

Mens Weekend

A – Colin Lynes
B – Gary Jackson
C – Richard Stidworthy
D – Tom Spijkers
E – Mario Marques
F – Phil Clarke

Ladies Weekend

A – Judy Canning
B - Liz Shaw
C - TO BE FOUND

Mixed Weekend

A – Jacquie Lynes
B - Kyle Smith
C - Phil Davis
D – Penny Simpson

Banbury Town (Midweek)

A - TBC

B – Cheryl Messer

C – Val Swann

Facilities

The Banbury Sports Ground is situated off Horton View that runs between the Horton Hospital entrance along the Oxford Road and the Banbury School entrance along Springfield Avenue.

The tennis facility consists of six "all weather" courts and a single room club house that has electricity and running water. Two of the courts are floodlit and used for club nights during the winter.

Banbury Lawn Tennis Club leases the courts from the town council, with one court available for public use. During the day the club coach and local schools have use of the courts.

Apart from the public court, all other courts are locked and adult members can obtain a key from the Treasurer.

Before leaving, members are asked to:

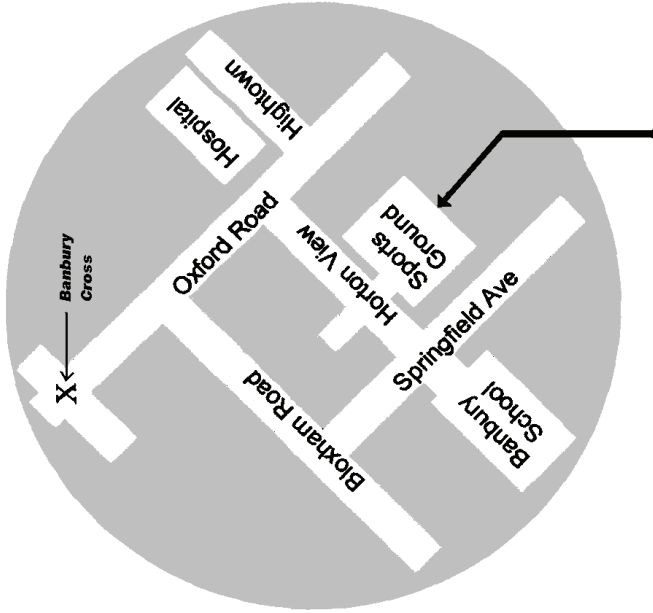
- * *make sure the facility is secure*
- * *all lights are turned off*
- * *nets are wound down*

Tennis club members are able to use the pavilion facilities that include toilets, showers, and Bowls Club bar and lounge.

There is a £3.00 fee for visitors who will be expected to join the club after three visits.



Club Information 2011



BANBURY LAWN TENNIS CLUB HORTON VIEW SPORTS GROUND

HORTON VIEW

BANBURY, OX16 9HR

www.banburytennis.co.uk

**Secretary: Margaret Andrew
Tel: 01295 252391**

Check our web site for extra details,
up-to-date news and match fixtures.



Club Nights

League Tennis

Coaching

Adults & Juniors

All Standards

— THE —
ESSENTIAL

SPORTS CO. LTD

52 Parsons Street, Banbury

For all your Sporting needs.
Discounts for Club Members

History

Banbury Lawn Tennis Club is part of the Horton View Sports Ground to the south of Banbury, near to the hospital. The ground is owned by the County Council and consists of a large field for football and cricket, a bowls club and tennis, all surrounded by housing. The tennis club has been in existence since 1973 and is the only tennis club in Banbury Town with a population of around 45,000.

The club has a growing squad of juniors and an active senior membership supporting teams in the Oxfordshire and Banbury leagues. In the past the club has been very successful having reached the National Club Finals on two occasions.

Coaching

We have an experienced LTA qualified coaching team led by Godwin Abah. The club has a comprehensive programme of coaching for children and adults, including beginners, improvers and advanced junior squads. Non-members are welcome to attend the coaching sessions, but fees are reduced for members.

For more details contact:

Godwin Abah: 0786 432530

Or visit the club's web site coaching page at:

www.banburytennis.co.uk/coaching.htm

Membership

Membership runs from April to March and fees (listed opposite) are due at the start of April. "Played in Juniors" are those considered, by the club coach, to be able to play at adult club nights and are not included in Family membership. A Parent member can play with Junior members only outside of normal scheduled activities.

Each Adult and Junior must complete and return an Application/Renewal form with payment to:

Frank Smith (Treasurer)
21 Trinity Close,
Banbury,
Oxon OX16 0UA
01295 266989

Activities

This is an open and friendly club, offering something for all ages and abilities. There is no dress code or playing standard, though beginners will be encouraged to join our coaching classes. There are matches in local and county leagues for those who want competition, or just come to the club nights and enjoy a pleasant drink in the bar to finish off the evening. With plenty of activities for juniors and the occasional social event, there should be something for everyone.

Summer Schedule (starts April)

Monday	- 4:00 to 6:00 - 6:00 to 7:30	Junior Coaching Adult Beginners Coaching
Tuesday	- 1:30 to 4:00 - 3:30 to 6:00 - 5:00 to 6:30 - 6:00 onwards	Seniors Afternoon Individual Coaching Junior Club Night Adult Club Night
Wednesday	- 4:00 to 6:00 - 6:15 onwards	Group/Individual Coaching League Matches
Thursday	- 4:00 to 7:00 - 6:00 to 8:00	Junior Coaching Adult Match Practice
Friday	- 4:00 to 6:00 - 6:00 onwards	Individual Coaching Adult Club Night
Saturday	- mornings - 1:30 onwards	Junior Coaching League Matches
Sunday	- mornings - 1:30 onwards	General Tennis League Matches

Winter Schedule (Starts October)

The above schedule will remain in place except that there is no club night on Tuesdays or matches on Wednesdays. Much of the junior coaching for under 10's will move indoors during the winter. This leaves the floodlit courts available for members to book on these nights. This can be done via the Court Booking link on the club website: **www.banburytennis.co.uk**
Light tokens are available from the Treasurer.

See the Club notice board for details on court usage.

Membership Application/Renewal

- Please Tick **By 1st May**
- Adult Member £101.00
- Senior Citizen—over 60's £59.00
- Family (2 adults & up to 3 jnr) £205.00
- Family (1 adult & up to 3 jnr) £110.00
- Young Adult (18-23) £52.00
- Played in Junior £40.00
- Junior—Under 18 £23.00
- Junior—Under 10 £14.00
- Associate Member £5.00
- Parent Member £15.50

Name:	DOB:
Name:	DOB:
Address	
Post Code:	
Home Phone:	
Work Phone:	
Mobile:	
E-mail:	

Method of Payment: Cheque Cash

Signature: _____

Date: _____

Data Protection:

If you don't want your information to be made available, on a need know basis, please tick this box

CHEQUES PAYABLE TO:
BANBURY LAWN TENNIS CLUB